



ST. PAUL'S
LUTHERAN CHURCH
MINISTRY EXPANSION
CAMPAIGN
2024



FROM THE DESK OF PASTOR BEN



10 years ago I first laid my eyes on the Call documents to be the pastor at St. Paul's Lutheran Church. In the opening pages was very direct language-- we do not want to lose

contact with "the next generation" but want to leave a legacy and pass on our faith. I cannot express to you how much joy it brought me to read of a congregation looking beyond the individual members, and instead looking to make sure that the name of Jesus Christ can continue to be proclaimed at this outpost in a small mountain town.

The legacy of St. Paul's goes back to 1884 and continued through the years of worship when the church was located on 4th Avenue. The same legacy enabled the members to persevere through the fire in 1971 at our current location on Junction Street. This tenacity of spirit is still alive today and I'm honored to be connected to this legacy! As we look to the

future and seek God's wisdom and guidance to answer His call to be disciples in southwest Colorado, it is clear that we must address the aging infrastructure of our facility.

To accomplish this we must not lose focus on where this legacy began... with Jesus Christ and His mission to make more disciples. We must discern together a plan for our facility that supports our current ministries as well as new ones yet to be revealed. Through these ministries we will serve and teach the next generation while further developing our culture of hospitality and praise.

I pray that you will be encouraged by this campaign booklet. Pray over the content with your household. We ask that you commit to the ministries and work that Jesus has laid out for us to accomplish. My family and I are excited to join you in this work.

In Christ,

Pastor Ben



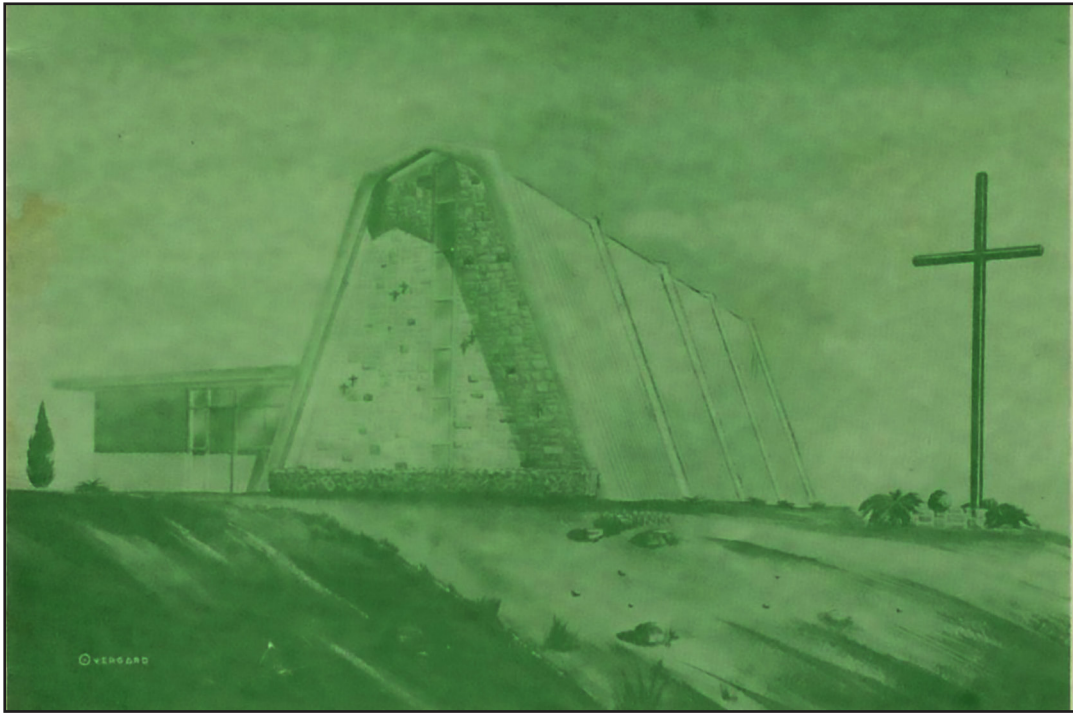
"We ought always to give thanks to God for you...because your faith is growing abundantly, and the love of every one of you for one another is increasing"

2 Thessalonians 1:3

We are a loving Christian community caring for peoples' greatest needs.

Jesus certainly cares for our needs through the gathering of our family of faith.

This enables us to use our stations in life to serve and teach those around us, bringing them closer to Jesus. Our prayer is that through individual and collective effort more people join us on Jesus' mission.



It is inspiring to know that we're connected to something bigger than us.

Carol McKelvey writes, "As a longtime member, I have seen many changes at St. Paul's through membership, pastors, and facility changes. It was during my dad's time as pastor that the church burned. What a tragic event for our church! However, with the guidance and help of God, strong congregational and pastoral leadership, and the perseverance of the members, the church was rebuilt. I see these same qualities in our congregation today. I am excited for the future of St. Paul's with our new growth program."

Though we can't predict what the future will bring, God's faithfulness in the past inspires us to trust Him with our future.

KEY DATES



MARCH 3RD	CAMPAIGN LAUNCH
MARCH 10TH	IN-PERSON FORUM
MARCH 13TH	DIGITAL/IN-PERSON FORUM
MARCH 24TH-30TH	HOLY WEEK PRAYER & WORSHIP EVENTS
MARCH 31ST	EASTER
APRIL 14TH	COMMITMENT CELEBRATION
APRIL 28TH	CONGREGATIONAL VOTERS MEETING
MAY 5TH	FIRST GIFTS



In the fall of 2023, St. Paul's sought the guidance of The Lutheran Church Extension Fund to conduct a Ministry Campaign. Through this process, we determined four pillars in which we want to expand our ministry.

WE PRAISE

THE PEOPLE OF ST. PAUL'S ARE EAGER TO WORSHIP GOD.

We have been gathered by Jesus to praise His name. At the core of what we do, we are creatures who praise our Creator. We have been given a legacy in our liturgy to learn how to praise our God. In worship, God makes Himself known through real, tangible things: Word and Sacrament. Our liturgy helps us to understand who God has revealed Himself to be. Imagine what would happen if we amplified our worship experience with tools that enhance our liturgy and tangibly help us to understand the full magnitude of praise to our God.

WE ARE HOSPITABLE

THE PEOPLE OF ST. PAUL'S WELCOME EVERYONE TO THEIR CAMPUS.

Our family of faith enjoys gathering for food and fellowship. One of the strengths of the church is this intergenerational gathering. Our children learn from this community what it means to serve, to care, to be generous, to be a man or woman of faith. This is vital to our relationships with our Lord and with one another. It is in fellowship that we learn and teach what hospitality looks like at all stations of our lives.

WE TEACH

THE PEOPLE OF ST. PAUL'S ARE CALLED TO GROW IN THEIR UNDERSTANDING OF THE GOSPEL

Making disciples happens through teaching the promises of God. Parents are the primary educator and influencer of their child's faith. We want to provide resources to parents that equip them to be disciples of Jesus themselves so that they can facilitate their child's faith development. In this, the entire family of faith is engaged in learning and teaching the Word of God.

WE SERVE

THE PEOPLE OF ST. PAUL'S CARE FOR THEIR COMMUNITY

Having been freed from the burden of pursuing heaven, what will you do with your free time? "The love of Christ compels us" 2 Corinthians 5:14. Compelled by Christ's love we turn in service to others. We are called to bring people close to Jesus and this often happens by means of caring for people's needs. This is what Jesus teaches in Matthew 5:16 "let your light shine before others, so that they may see your good works and give glory to your Father who is in heaven." Now we're released into the world for the benefit of our neighbor

OUR MINISTRY FUTURE



We have delayed challenging facility decisions for years, and it's time for action. Safety enhancements and general maintenance will ensure that our facility is able to serve our ministry objectives now, and Lord willing, well into the future.

SANCTUARY MODERNIZATION

Praise God our sanctuary has served us since it was rebuilt in 1973; however it remains largely unchanged since then. New flooring, improved communion access, audio/visual enhancements, a soundproof cry room, and worship tools will liven the sanctuary and make the worship experience safer and more engaging for all.

GATHERING SPACE

The Gathering [Narthex] will be expanded to allow for more occupancy, better access to the sanctuary, and fellowship opportunities. This expansion will also redirect foot traffic towards a new entrance to the sanctuary on the south side of the building, galvanizing the experience of entering our worship space.

THE OVERLOOK

The Overlook [Side Yard] will be enhanced to become a focal point for gathering and an overflow space for the sanctuary. It will also serve as the new access to the sanctuary. Fresh landscaping will grant us visibility and intrigue from the street view, our most visible space to the public.

ANIMAS ROOM

The Animas Room [Bible Study/Old Preschool] will be a buffer area for coming and going as well as a large space for events and ministry activities. This will facilitate our family of faith's goals to be in relationship with visitors and one another.

KEY CHANGES

- Worship Aid Enhancements
- The Gathering Expansion
- The Overlook Enhancements
- New Flooring
- HVAC Upgrades
- Audio Visual Upgrades
- Soundproof Cry Room



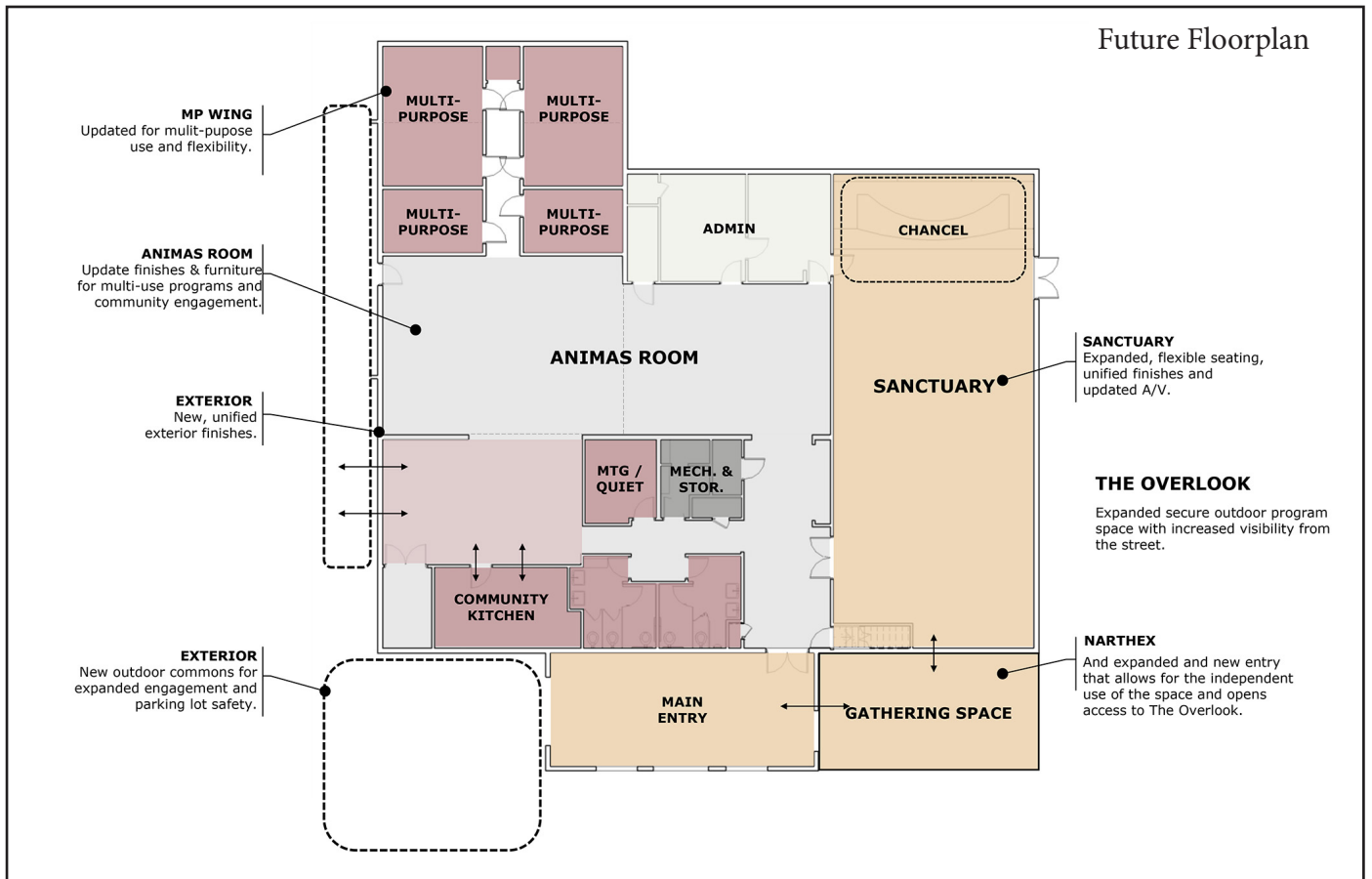
Current Massing



Future Massing



Future Entrance



FINANCIAL PLAN AND CAMPAIGN GOALS



Jesus has blessed St. Paul's with people, property, and finances to maintain ministries for the last 140 years. During recessions and lean times, we have pulled together, trusted Jesus, and come through without issue. During rich times we have responded and expanded ministries and facilities. Faithful financial stewardship is a core value for us as a family of faith. Our church is thriving now and we have significant momentum.

St. Paul's is further blessed to have a partner in Lutheran Church Extension Fund (LCEF), who has guided our development of the goals laid out in this booklet.

We are asking you to please pray over how the Lord is inviting you to commit to Growing to Serve the Kingdom over the next three years, 2024-2027. Our estimated Phase 1 improvements and modernization costs are approximately \$1.5 million. However, because of the generosity and faithfulness of people past and present, we already have an amazing head start of \$540,000.00 in available general funds and endowment that could be used towards this project.

CAMPAIGN MATH

\$760,000 Campaign Goal

\$540,000 St. Paul's Endowment and General Fund

+ \$200,000 LCEF preapproved loan

\$1,500,000 Total Project Cost



As we grow together through prayer, conversation, worship, and fellowship, consider what time, abilities, or treasure God is calling you to give. Growing to Serve the Kingdom is about following the Lord's calling forward into the future, growing as a congregation and a community with Jesus forever our focus. Growing to Serve the Kingdom will result in the blessing of amazing facility improvements that will provide more opportunities for meeting and ministry for the next 30-40 years. But at its core, it is about more than a building.

Growing to Serve the Kingdom is about living out our congregational vision of:

**We are a loving Christian community
caring for peoples' greatest needs.**

HOW YOU CAN MAKE AN IMPACT



PRAY

For the Lord's continued guidance of Growing to Serve the Kingdom: for the congregation, leadership team, volunteers, and all who will be blessed by its fruits.

GROW

Because God loves us, He gives us opportunities to grow in faith.

COMMIT

To those opportunities as you spend time in prayer and study God's Word in worship, Bible Study, and personal devotions.

GIVE

God directs each of us in personal ways to give our time, abilities and treasures for the purpose of His ministry. Please consider how He is calling you at this pivotal moment in our history to support Growing to Serve the Kingdom.



FROM THE MINISTRY CAMPAIGN TEAM



The Ministry Campaign Leadership Team is excited and fully committed to providing as much information about this Ministry Plan as possible. A year ago, St. Paul's voted to build a Master Plan in response to the ministry opportunities the Lord has given to us. We are confident in its focus, its goals, and the supporting financial plan.

The Ministry Campaign Team is committed to keeping our congregation fully informed and involved.

This plan is more than buildings and dollars; it's a path forward for us as servants of the church. Join us in committing to this Ministry Expansion Campaign. Prayerfully consider your volunteer life at St. Paul's and connect in new ways. Continue your faithful financial stewardship and give over and above.

God bless and guide us as we, His beloved family, bring people one step closer to Him.
-Pastor Ben Delin

CAMPAIGN TEAM

Ask us details!



Pastor Ben Delin
Pastor



Mark Gusewelle
Campaign Director



Scott Shine
Prayer Coordinator



Dick Jung
Financial
Coordinator



Niede Jimenez
Connection Team



Louise Snyder
Connection Team



Bev Skyles
Hospitality
Coordinator



Allison Flores
Communications
Manager



Amanda Nelson
Communication
Team



Julianna Zastrocky
Communication
Team



"We ought always to give thanks to God for you...because your faith is growing abundantly, and the love of every one of you for one another is increasing."

THE URGENCY



Growing to Serve the Kingdom is our plan, led by Jesus, to be a loving Christian community caring for people's greatest need for years to come. The road forward will take our devotion, our prayers, our time, and our finances. Throughout the history of St. Paul's, members have stepped forward in faith to build our current ministries and facilities. It took people like you being engaged and active in those events and ministries. We believe the time is now to involve you as a partner to continue this work so that we may continue to bless generations to come, who will lift up the Lord's name in Durango until He returns.

Thank you in advance for your prayerful consideration and suggestions on how St. Paul's can best serve our community in the years to come. Help us dream big! We invite you to commit to regular service, financial giving, and daily prayer because Jesus gave us this work to do in His name. We can only accomplish this ministry work if together as God's faithful family, we fully commit and give generously.

May Jesus guide you and all of us in our work Growing to Serve the Kingdom.





Growing
to **Serve** the
Kingdom